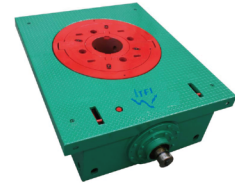
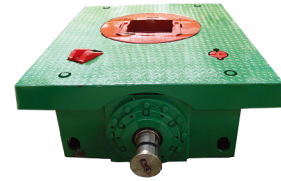


2.8 Rotary Tables

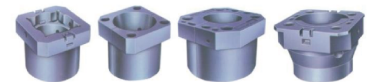
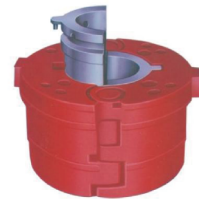
TFI rotary tables are designed and manufactured according to API Spec 7K specification. They feature alloy steel hardened teeth gears, highly reliable seals, and are widely championed for their dependability in the field.



Model		ZP175	ZP205	ZP275	ZP375	ZP495
Opening Dia.	mm (in)	444.5 (17-1/2")	520.7 (20-1/2")	698.5 (27-1/2")	952.5 (37-1/2")	1257.3 (49-1/2")
Center of Table to Center of Sprocket	mm (in)	1118 (44")	1353 (53-1/4")	1353 (53-1/4")	1353 (53-1/4")	1651 (65")
Max. Static Load	kN (lbs)	2700 (600,000)	3150 (700,000)	4500 (1,000,000)	5850 (1,300,000)	7250 (1,600,000)
Max. Working Torque	N.m (ft-lbs)	13,729 (10,125)	22,555 (16,634)	27,459 (20,253)	32,362(23,866)	37,000 (27,286)
Max. Speed	r/min	350	300	300	300	300
Gear Ratio		3.75	3.22	3.67	3.56	3.93
Overall Dimension (L×W×H)	mm (in)	1974×1366×560 (78"×54"×22")	2217×1500×660 (87"×59"×26")	2392×1670×685 (94"×66"×27")	2468×1810×718 (97"×71"×28")	2940×2184×813 (116"×86"×32")
Weight	kg (lbs)	3667 (8083)	5500 (12,125)	6122 (13,496)	7970 (17,570)	11,626 (25,630)

2.8.1 Master Bushing

Bushing Type	Rotary Table Size	Insert Bowls	Applicable Pipe O.D.
MSS Solid Body and Split Body	17-1/2"	API Bowl 1011	2-3/8" - 8-5/8"
		Ext. Bowl 1024	
	20-1/2"	API Bowl 1011	2-3/8" - 8-5/8"
		Ext. Bowl 1024	
	27-1/2"	API Bowl 1022	2-3/8" - 8-5/8"
		Ext. bowl 1025	
Insert Bowl 1026		9-5/8" - 10-3/4"	
MDSP Split Body	17-1/2"	Ext. NO.3 Taper	2-3/8" - 8-5/8"
	20-1/2"	Ext. NO.3 Taper	2-3/8" - 8-5/8"
		Ext. Bowl 1809	2-3/8" - 8-5/8"
MSPC Solid Body	20-1/2"	Bowl 1902	9-5/8" - 10-3/4"
		Body only 1805	11-3/4" - 13-3/8"
		Bowl 1810 (No.3)	2-3/8" - 8-5/8"
	27-1/2"	Bowl 1904 (No.2)	9-5/8" - 10-3/4"
		Bowl 1903 (No.1)	11-3/4" - 13-3/8"
		Ext. No.3 Taper	2-3/8" - 8-5/8"
MSP Split Body	27-1/2"	Ext. No.3 Taper	2-3/8" - 8-5/8"
		Bowl 6608 (No.3)	2-3/8" - 8-5/8"
		Bowl 6609 (No.2)	9-5/8" - 10-3/4"
MPCH	37-1/2"	Bowl 6610 (No.1)	11-3/4" - 13-3/8"



2.8.2 Roller Kelly Bushing

Type	Style	Drive Type	Applicable Kelly Size	
			Square	Hexagonal
HDS	Heavy Duty	Square Drive	2-1/2" - 6"	3" - 6"
27-HDP		Pin Drive	2-1/2" - 6"	3" - 6"
20-HDP		Pin Drive	2-1/2" - 6"	3" - 6"
4KRVS	Medium Duty	Square Drive	2-1/2" - 5-1/4"	3" - 4-1/4"
20-MDP		Pin Drive	2-1/2" - 4-1/4"	3" - 4-1/4"
17-MDP		Pin Drive	2-1/2" - 4-1/4"	3" - 4-1/4"
4KRBM	Light Duty	Square Drive	2-1/2" - 4-1/4"	3" - 4-1/4"



2.8.3 Casing Bushing

Type	Rotary Table Size (in)	Applicable Casing Size / Bushing & Inserts P/N													
		9-5/8" - 10-3/4"		11-3/4" - 13-3/8"		16"		18-5/8" - 20"		24"		26"		30"	
		Body No.	Insert No.	Body No.	Insert No.	Body No.	Insert No.	Body No.	Insert No.	Body No.	Insert No.	Body No.	Insert No.	Body No.	Insert No.
CU	17-1/2 or 20-1/2	3102	1902	3102	N/A	N/A	N/A	N/A	N/A	N/A	N/A	N/A	N/A	N/A	N/A
CUL	27-1/2	N/A	N/A	3103	3105	3103	3104	3103	N/A	N/A	N/A	N/A	N/A	N/A	N/A
CB	27-1/2	6695	6114	6695	6126	6695	6127	6695	N/A	N/A	N/A	N/A	N/A	N/A	N/A
	37-1/2 or 49-1/2	20	6114	20	6126	20	6127	20	N/A	24	N/A	26	N/A	30	N/A